

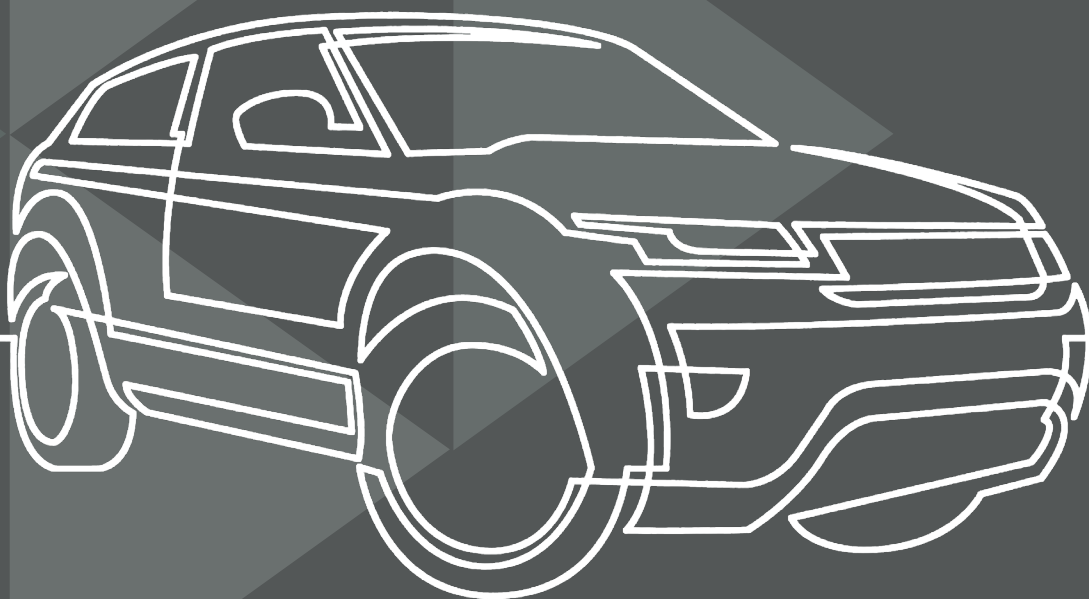
# PRESTIGE

UNDERWRITING

---

## CUSTOMER GUIDANCE

# WINTER DRIVING



# WINTER DRIVING ADVICE

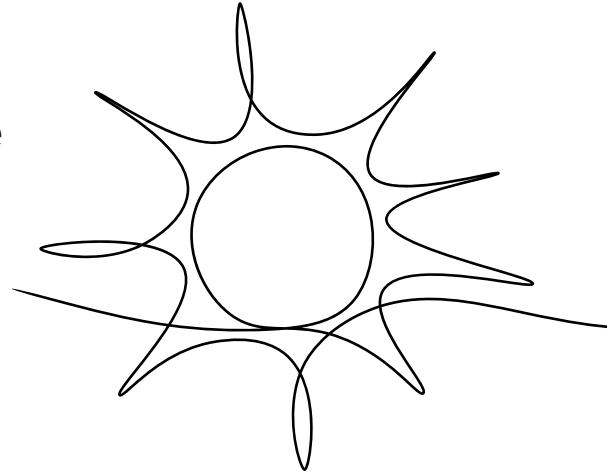
## ALLOW EXTRA TIME

Allow yourself an extra 10 minutes to de-ice your car and ensure all windows are clear. Allow for extra travel time on your journey in the event of diversions, route changes or accidents on the road.

---

## WINTER SUN

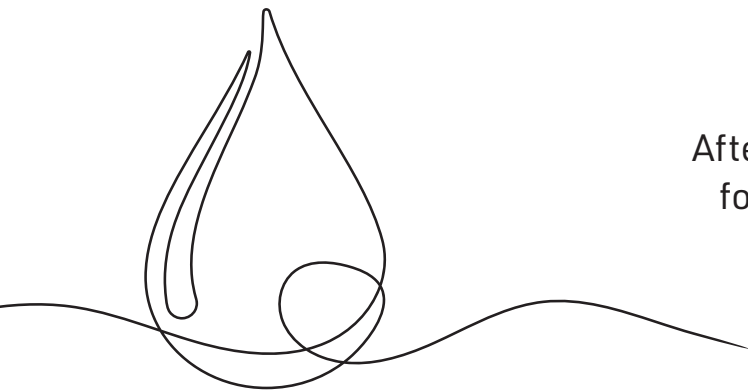
With overall visibility restricted reduce speed and take precaution. Ensure you have washing fluid with anti-freeze properties to keep your windows clear at all times, as the sun will show up any dirt or grime, restricting your visibility further. It is also handy to keep sunglasses stored in your car as you may need them!



---

## SURFACE WATER

After heavy rainfall surface water can lie in areas for prolonged periods of time, therefore reduce your speed. Should you drive through a flood, make sure to test your brakes once you come through the water.



---

## BLACK ICE

With freezing temperatures, there is a heightened risk of black ice. It is important to be cautious of secondary and country roads which are unlikely to be treated by gritters.

In snow or icy conditions, it will take longer to stop - always drive at a speed appropriate for the conditions.

---

## DRIVING IN THE DARK

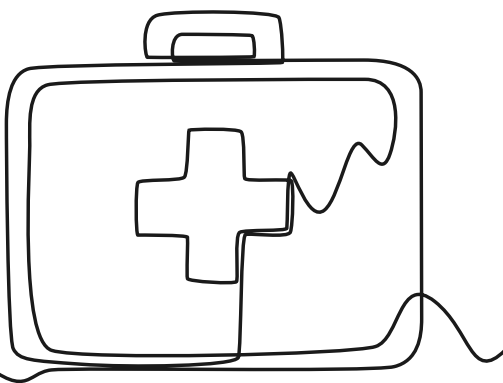
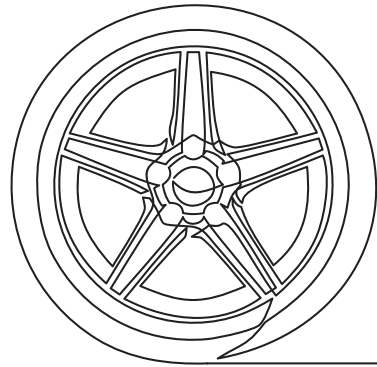
Respect oncoming traffic by dipping headlights well in advance. Remember when your environment changes, for example switching from the computer screen indoors to getting into the car, it takes your eyes a certain time to adjust to the change in lighting, hindering visibility until your eyes have fully adjusted.

---

## SERVICING AND CHECKS

Ensure your vehicle is well maintained and serviced. Keep the lights, windows and mirrors clean and free from ice and snow. Make sure wipers and lights are in good working order. Add anti-freeze to the radiator and winter additive to the windscreen washer bottles. Antifreeze helps protect your engine and any pricey repairs associated with your car radiators or engine. Keeping a regular check on your car battery is advised as batteries can often play up when weather conditions change.

Check that tyres have plenty of tread depth and are maintained at the correct pressure. Ensure your tyres are inflated correctly and replace them before the tread reaches the legal minimum of 1.6mm, this will ensure a better and safer grip. Please note, the tyre thread for winter is recommended to be 4mm.



## WINTER EMERGENCY KIT

Have an emergency kit in your car in the event of a breakdown, including important items such as, reflective, and warm clothing, torch, warning triangle, cones, spare tyre, phone charger, ice scraper, first aid kit and water.

### Disclaimer:

It is recommended that you consult the manufacturers guidelines, as these can vary from make and models and talk to a professional where appropriate for specific advice regarding your vehicle.

[www.prestigeunderwriting.co.uk](http://www.prestigeunderwriting.co.uk)

Part of the Prestige Insurance Holdings Group. Prestige Underwriting is a trading name of Prestige Insurance Holdings who are authorised and regulated by the Financial Conduct Authority.